



**08 – 10**

NOVEMBER 2017

BAD SALZUFLEN  
EXHIBITION CENTRE

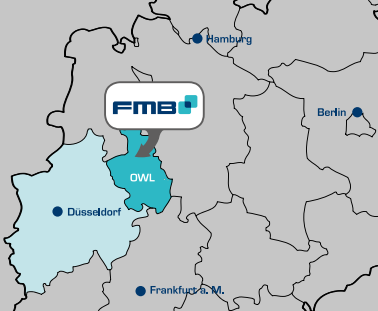
**SEE YOU AT THE SHOW**

Visit our show booth.

Your personal  
**Ticket-Code**  
on the back!

**FMB**  
ZULIEFERMESSE MASCHINENBAU

[www.fmb-messe.de](http://www.fmb-messe.de)

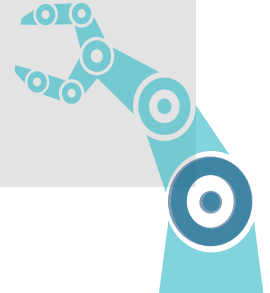


## EFFECTIVE. PERSONAL. FOCUSED

The show is not only a fixture in the calendars of exhibitors and trade visitors from the region as a starting point for new and attractive business relationships. Numerous well-known and leading suppliers from Germany and abroad will also be taking part in the event.

### **PARTICIPATION, HAVING A SAY, ADVANTAGES: HOW YOU BENEFIT FROM FMB**

- A purely sector-specific trade fair for experts
- Concentrated know-how to optimise your process operations
- New ideas for greater efficiency, intelligence and productivity
- Programme of talks and lectures covering diverse topics
- Multifaceted synergistic effects through targeted networking
- Personal contacts for new perspectives



» RIGHT IN THE MIDDLE  
OF THE MARKET

About **700** mechanical engineering  
manufacturers and suppliers in OWL  
generate an annual turnover of some  
**21 billion** euros.\*



Named as a Leading-Edge Cluster  
by the Federal Ministry of  
Education and Research.

\*Source: IHK Ostwestfalen zu Bielefeld and IHK Lippe zu Detmold (Chambers of Commerce and Industry), data 2015.

# MEET US AT FMB 2017

FMB is a trade show with a workshop character. Many design engineers and buyers come with specific requests and projects. The main focus is on discussions between the exhibitors and visitors.

## EXHIBITORS' KEY TOPICAL SECTORS

- Assembly, handling and automation systems
- Drives mechanical/electrical
- Electrical engineering
- Machine parts, modules and systems
- Measurement & control technology
- Energy management, services for industry
- Fluid power technology, robotics and more

WE LOOK FORWARD TO WELCOMING YOU  
AT THE FORTHCOMING FAIR!



For an up-to-date list  
of exhibitors, visit:

[www.fmb-messe.de](http://www.fmb-messe.de)



**YOUR PERSONAL TICKET CODE:**

Register now at:  
[www.fmb-messe.de/registration](http://www.fmb-messe.de/registration)

## VENUE

Messezentrum Bad Salzufflen  
Hall 20 and 21  
Benzstraße 23  
D-32108 Bad Salzufflen

## OPENING HOURS

8–9 November 2017  
from 9 am to 5 pm  
  
10 November 2017  
from 9 am to 4 pm

## HOW TO GET TO FMB

